

KARIBAN

REFERENCE : K9105

SIZES : S_M_L_XL_XXL_3XL_4XL

COMPOSITION :

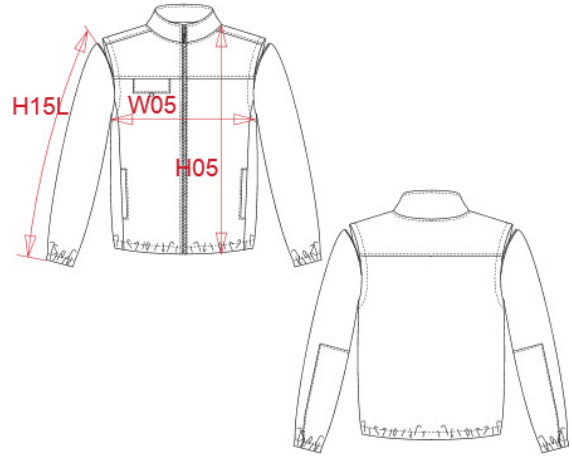
Main fabric : Polarfleece 400 100%polyester
 Fabric 2 : Polyester taslon AC coating - 85 For contrasted part 100%polyester
 Lining 2 : Polyester 210T - 60 For sleeve lining 100%polyester

WEIGHT :

Main fabric : 400 gsm
 Fabric 2 : 85 gsm
 Lining 2 : 60 gsm

ARTICLE WEIGHT :

860 gr/pc



DESCRIPTION
Français : Veste polaire manches amovibles
English : Fleece jacket with removable sleeves
Nederlands : Fleecejas met afneembare mouwen
Deutsch : Fleecejacke mit abnehmbaren Ärmeln
Español : Chaqueta polar con mangas amovibles
Italiano : Giacca in pile con maniche staccabili
Português : Casaco polar com mangas amovíveis

COLORS	PANTONE SERIGRAPHIE
Black	Black
Navy	433C

MEASUREMENT							
Description	S	M	L	XL	XXL	3XL	4XL
H05 (M) Hauteur totale / Total height	70,75	72,75	74,75	76,75	78,75	80,75	82,75
W05 (M) 1/2 largeur poitrine à 1.5cm de l'emmanchure / 1/2 chest width at 1.5cm below armhole	53	56	59	62	65	68	71
H15L (M) Longueur manche longue / Long sleeve length	68,50	70	71,50	73	74,50	76	77,50

CARE LABEL				

PACKING	
Box	10 pcs/box S= L:60cm W:40cm H:36cm NW:8.7kg GW:10.7kg M=>L:60cm W:40cm H:36cm NW:8.8kg GW:10.8kg L=>L:60cm W:40cm H:36cm NW:8.9kg GW:10.9kg XL=> L:60cm W:40cm H:36cm NW:9.3kg GW:11.3kg XXL=>L:60cm W:40cm H:36cm NW:9.5kg GW:11.5kg 3XL=>L:60cm W:40cm H:36cm NW:9.7kg GW:11.7kg 4XL=>L:60cm W:40cm H:36cm NW:10kg GW:12kg